



COVERED PARKING

Design Concept & Specifications

KPRB Pilots

Paso Robles, CA
August 12, 2024

(805) 501-5556
Glenn805@icloud.com

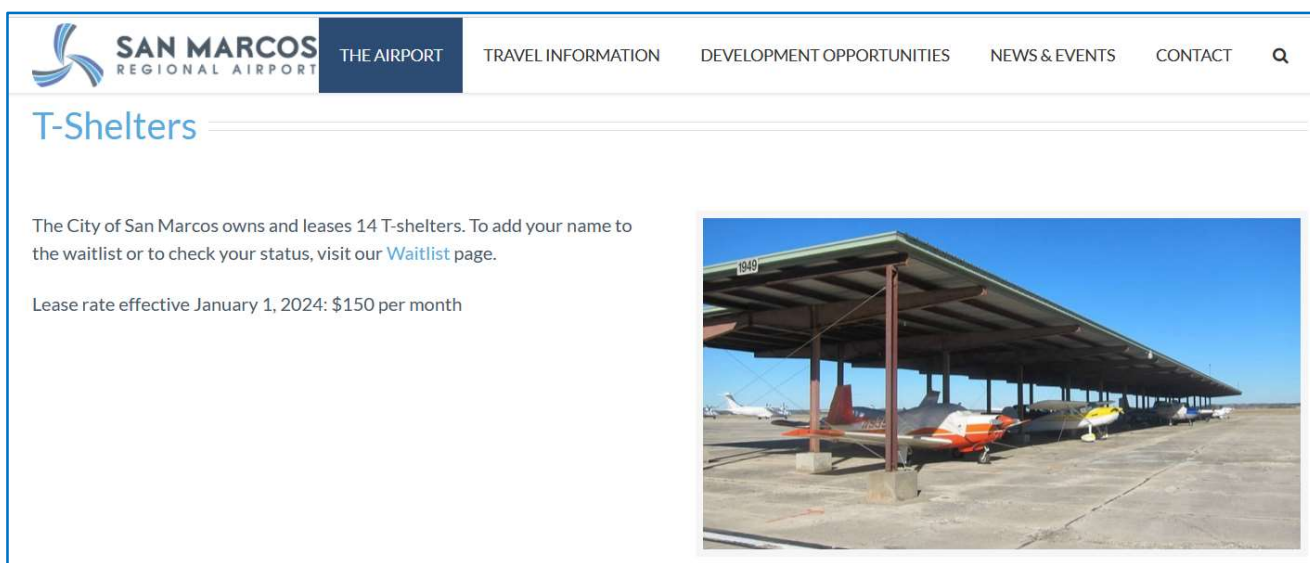
Covered G.A. Parking - Concept & Design Specification

Background & Need

There has been much talk recently about adding T-hangars and smaller box hangars to the airport. Some have been proposed formally to the city by FBO candidates / developers. While more hangars may be needed, KPRB Pilots believe a sizable segment of airport users are being overlooked, and will not benefit from hangars, due to the price of rent generally being \$400/mo and up. This is out of the reach of many middle-class sole-owners, newer pilots, etc.. Single-engine aircraft owners that currently use ramp tie-downs are interested in covered ramp parking at the field, as this would be a more affordable way to gain some of the benefits of hangars; shade in Summer and rain protection in Winter. These new benefits would reduce UV and water damage and encourage time to be spent at the airport, with our planes, and on aircraft maintenance. This document reflects the ideal design concept and specific requests / suggestions from KPRB pilots themselves.

EXAMPLES

Here are examples of similar general-aviation covered parking:



SAN MARCOS REGIONAL AIRPORT THE AIRPORT TRAVEL INFORMATION DEVELOPMENT OPPORTUNITIES NEWS & EVENTS CONTACT

T-Shelters

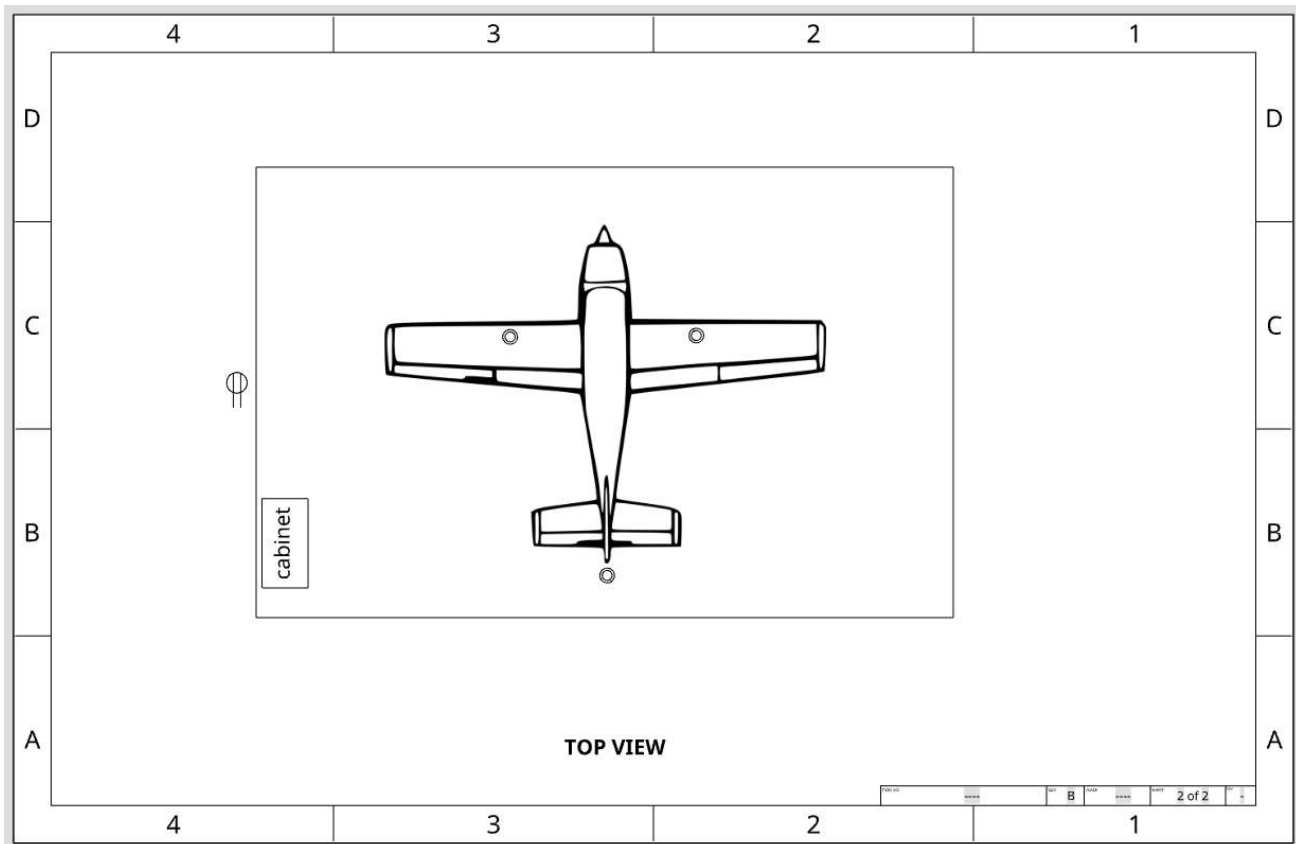
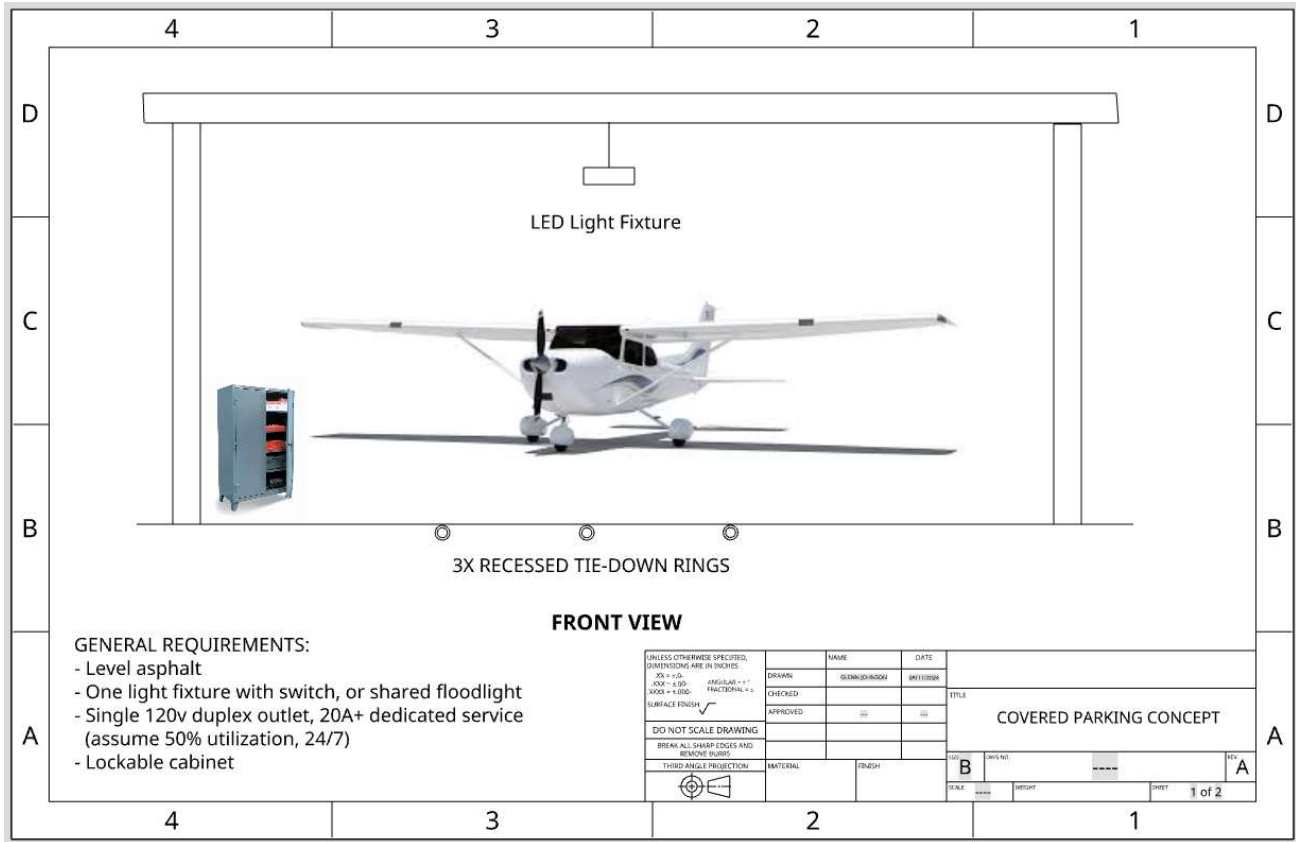
The City of San Marcos owns and leases 14 T-shelters. To add your name to the waitlist or to check your status, visit our [Waitlist](#) page.

Lease rate effective January 1, 2024: \$150 per month



“Shade Port” Parking
Starting at \$186 per month.

DESIGN CONCEPT



SPECIFICATION

- Spots sized to fit, with clearance, the largest common general aviation aircraft (example: wingspan of 35ft, length 27ft, tail height 10ft, tail width 12ft). Approx. ten percent of spots can be larger for twins etc.
- Roof only, with columns/posts spread as far apart as is possible
- Gutters & downspouts or adequate overhangs
- Level grade with asphalt
- Recessed / flush anchor points with eyes (3)
- Electrical:
 - one 20A outlet per parking space
 - one LED light fixture per space, or floodlight on dusk-dawn
- Permanently-mounted steel storage cabinet/box per space

Other desires mentioned so far by pilots include:

- Pilots estimate 10-20 covered spots are needed on the field, and will rent
- Lowest cost, monthly rental price desired
- Requesting 1 covered spot be a shared maintenance space - see next slides

SHARED MAINTENANCE SPACE:

